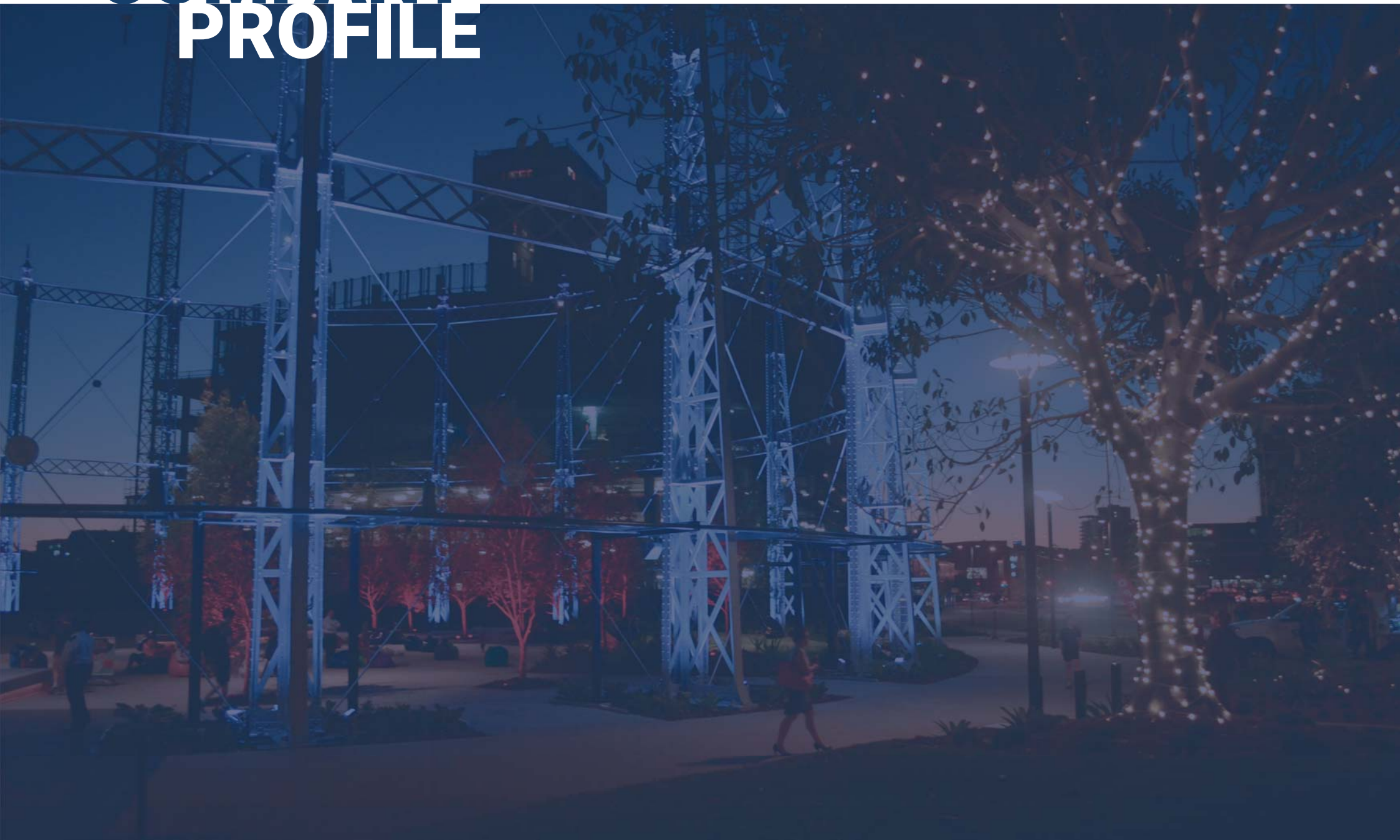


COMPANY PROFILE



JFP URBAN CONSULTANTS

80 YEARS

25000+ PROJECTS

PLACEMAKING

CREATING COMMUNITIES

GREEN PLACES

FOR PLAY, WORK AND LEISURE

ABOUT JFP EXPERIENCED

JFP's distinctive collection of professional disciplines promotes a well-balanced mix of creativity and precision that can be applied to any project within the urban environment.

Within JFP, our highly creative Urban Designers, Master Planners & Landscape Architects inspire innovation and lateral thinking, while the high level of precision consistently displayed by our Engineers, Surveyors and Town Planners is a reminder of the need to remain focused on project goals. In balancing both a creative and precise approach, all of JFP's professionals understand the importance of providing the right advice, at the right time in the right way.

When working as a whole, JFP is able to provide consulting services from a project's Concept stage through to Completion due to its distinctive multi-disciplinary structure. This offers clients the opportunity to appoint a single consultancy to manage all the major aspects of their project. JFP offers a truly integrated approach to the planning, design and project management of future urban environments and infrastructure.



TOWN PLANNING

URBAN DESIGN + MASTER PLANNING



SURVEYING + SPATIAL SERVICES

CIVIL + STORMWATER ENGINEERING



LANDSCAPE ARCHITECTURE



ECOLOGY + ARBORICULTURE

VISION

OUR VISION IS TO CREATE VIBRANT PLACES AND COMMUNITIES WHICH RESPECT THE ENVIRONMENT, RESPOND TO PHYSICAL CHALLENGES, EMBRACE HIGH QUALITY DESIGN PRINCIPLES, ARE SUSTAINABLE AND, IMPORTANTLY, MEET OUR CLIENT'S COMMERCIAL OBJECTIVES.

OUR APPROACH

WE EXPECT THAT TAKING A WELL BALANCED APPROACH, WHICH IS DEEPLY INGRAINED INTO JFP'S CORPORATE CHARACTER, WILL CONTINUALLY CHALLENGE US TO SEEK EXCITING, INNOVATIVE SOLUTIONS FOR EACH AND EVERY PROJECT.

OUR VISION IS FOR JFP TO EFFECTIVELY AND EFFICIENTLY ASSIST OUR CLIENTS TO CREATE EXCELLENT URBAN ENVIRONMENTS THAT MEET THE NEEDS OF AN INCREASINGLY DEMANDING MARKETPLACE.

TOWN PLANNING PROFILE

BY APPLYING THEIR UNDERSTANDING OF DEVELOPMENT APPROVAL PROCESSES, FOSTERING GOVERNMENT AND NON-GOVERNMENT RELATIONSHIPS AND USING LOCAL KNOWLEDGE, JFP'S TOWN PLANNERS PROVIDE CLIENTS WITH A SOLID FOUNDATION FOR THEIR PROJECTS.



TOWN PLANNING

JFP's Town Planners have a broad knowledge of planning and associated legislation, which they complement with a proactive approach to finding solutions for their clients.

By applying a thorough understanding of the development approval processes, fostering local relationships and using their experience and knowledge, JFP's Town Planners provide clients with the tools they require to deliver their projects. Comfortable and experienced in operating as part of a multi-disciplinary team, JFP's Town Planners are mindful of the critical path that exists between good planning and efficient delivery.



JFP'S TOWN PLANNERS are able to provide the following services:

**Statutory Planning
Development Approval
Management
Feasibility and Due
Diligence Advice
Project coordination
during the DA process;
including liaising
with relevant sub-
consultants.**



URBAN DESIGN PROFILE

An aerial photograph of a large-scale urban development project. The central area features a dense, grid-like street pattern with numerous small, rectangular lots, some of which are highlighted in yellow. This central area is surrounded by green fields and a large body of water in the background. The overall scene is a mix of natural and developed land.

JFP UNDERSTANDS THAT GOOD DESIGN IS AN
ESSENTIAL ELEMENT OF URBAN DEVELOPMENT,
REGARDLESS OF SCALE, WHETHER RELATED
TO MASTER PLANNED COMMUNITIES OR
INDIVIDUAL ALLOTMENTS.

PIONEER LAKES

URBAN DESIGN + MASTERPLANNING

JFP's Urban Designers + Master Planners seek to create places that respect the environment, deliver efficient responses to site challenges, are socially sustainable and, importantly, meet our client's commercial goals.

JFP's Urban Designers + Master Planners are able to work in combination with JFP's wide-ranging professional team, including Town Planners and Landscape Architects, to deliver designs aimed at creating exceptional places to live, work and play. They apply their extensive experience to create places that can be efficiently delivered onsite; having regards to both aesthetic and practical construction considerations.

JFP understands that good design is an essential element in the delivery of new urban development, regardless of the scale, whether related to large scale Master Planned Communities or individual allotments.



OUR URBAN DESIGNERS provide the following services:

**Master Planning
Structure Planning
Sub-divisional Design
Townhouse Site Design
Concept Plans
Building Envelope Plans**



PEREGIAN SPRINGS



SURVEYING PROFILE



**JFP'S SURVEYORS HAVE BEEN DELIVERING
QUALITY INFORMATION TO OUR CLIENTS FOR
CLOSE TO EIGHTY YEARS. OUR TEAM DRAWS ON
THE EXTENSIVE EXPERIENCE WE HAVE GAINED
TO PROVIDE ACCURATE AND EFFICIENT SURVEY
DATA FOR ALL TYPES OF PROJECTS.**

SURVEY

JFP's focus is to provide quality survey information to our clients. JFP understands that the timely supply of accurate data allows for optimum design. JFP has a long tradition of providing survey services that reinforce a strong focus on innovation; which is achieved by embracing advancing technologies and developing the capabilities of staff.



**ENGINEERING +
CONSTRUCTION SURVEYS**
Hydrographic including
Remote Control Vessels
Volumetric
Stockpile
Construction Setout (Civil +
Building)
Building Control
Certifications
As Constructed (including
ADAC)
Vegetation
Route Planning
Utility Plan mapping
Site Monitoring

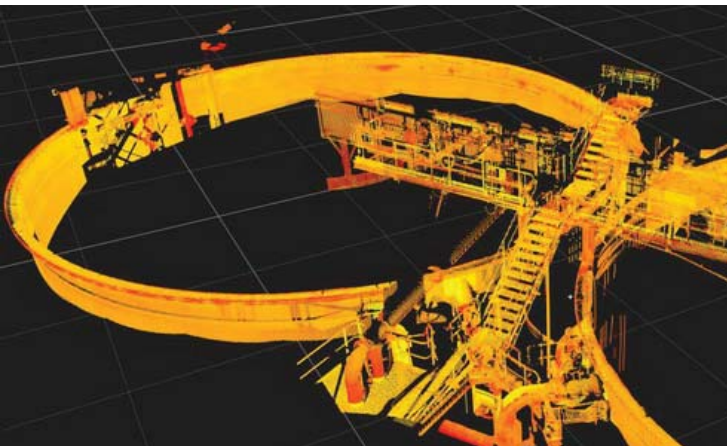
**CADASTRAL + PROPERTY
DEVELOPMENT SURVEYS**
Topographic
Identification
Leases
Land Title Issues
Community Title
Vegetation
Route Planning
Survey Plan Sealing



SPATIAL SERVICES PROFILE

An aerial photograph of a large-scale earthmoving project, possibly a dam or reservoir construction. The image shows terraced earthworks, a central pond, and various construction equipment and roads. The image is overlaid with a semi-transparent dark blue filter.

JFP'S SURVEYORS HAVE BEEN DELIVERING QUALITY DATA TO CLIENTS THROUGH THE USE OF INNOVATIVE AND ADVANCING TECHNOLOGIES WHICH HAVE BEEN EXTENSIVELY TESTED. IN PARTICULAR, THE USE OF UAV/ DRONE, SCANNING AND GIS MAPPING TECHNOLOGIES CAN PROVIDE CONSIDERABLE BENEFITS.



SPATIAL SERVICES

JFP has recognised that pioneering spatial technologies can be used to capture and manage data that can be critical to the success of a project. Recognising the tangible benefits that RPA/Drones, Scanners and GIS Mapping offer, JFP has developed considerable skills in applying these cutting edge technologies. In combination with JFP's extensive background experience in providing field survey services, these technologies are delivering tangible benefits to our clients.



POINT CLOUD CAPTURE USING UAV

REMOTE PILOTED AIRCRAFT (DRONE)

- Stockpile Survey
- Digital Surface Models
- Aerial Photography + Photogrammetry
- Site Inspection Videos
- Environmental Monitoring

SCANNERS

- Highly accurate, dense, colour point clouds/3D models
- Ideal for surveying detailed areas for engineering design work
- Perfect for Structures, vessels, tanks, pipework requiring upgrades/modifications

GIS MAPPING

- Development Opportunities/Constraints
- Feasibility Mapping / Georeferenced Site Plans
- Market Intelligence Mapping


PROJECT VISUALISATION

- Sales + Marketing Imagery + Videos
- 3D Modelling and rendering

MARKETING VISUALISATIONS



CIVIL ENGINEERING PROFILE



JFP'S ENGINEERS UNDERSTAND THE DEVELOPMENT PROCESS FROM INCEPTION TO BEYOND THE COMPLETION OF CONSTRUCTION. THIS PROVIDES A STRONG FOUNDATION IN ORDER TO DEVELOP CREATIVE SOLUTIONS FOR CLIENTS.



ENGINEERING

JFP's Engineering team has extensive knowledge of relevant local design standards and understands the development process intimately. Our team provides the required designs needed to develop creative solutions for clients. Experienced in managing both the design and delivery of projects in conjunction with other professionals, JFP's Engineers appreciate the impact that non-engineering issues can have on devising effective engineering



BIO-FILTRATION DEVICE

CIVIL ENGINEERING

- Development Cost Estimates + Feasibility Studies
- Preliminary Designs + Advice during Development Application Phase
- Road & Highway Design
- Stormwater Design & Management
- Water Reticulation Design
- Sewerage Reticulation Design
- Contract Administration
- Site Inspections

WATER ENGINEERING

- Trunk Sewer + Water Network Assessments
- Water Quality Investigations
- Infrastructure Agreement Advice
- Waterway Flood Analysis
- Erosion + Sediment Control
- Unitywater Accreditation

LANDSCAPE ARCHITECTURE PROFILE

OUR VISION IS TO CREATE ACTIVE COMMUNITIES,
SPACES AND WORKPLACES THAT RESPECT
THE ENVIRONMENT, RESPOND TO PHYSICAL
CHALLENGES, EMBRACE HIGH QUALITY DESIGN
PRINCIPLES AND ARE SUSTAINABLE.

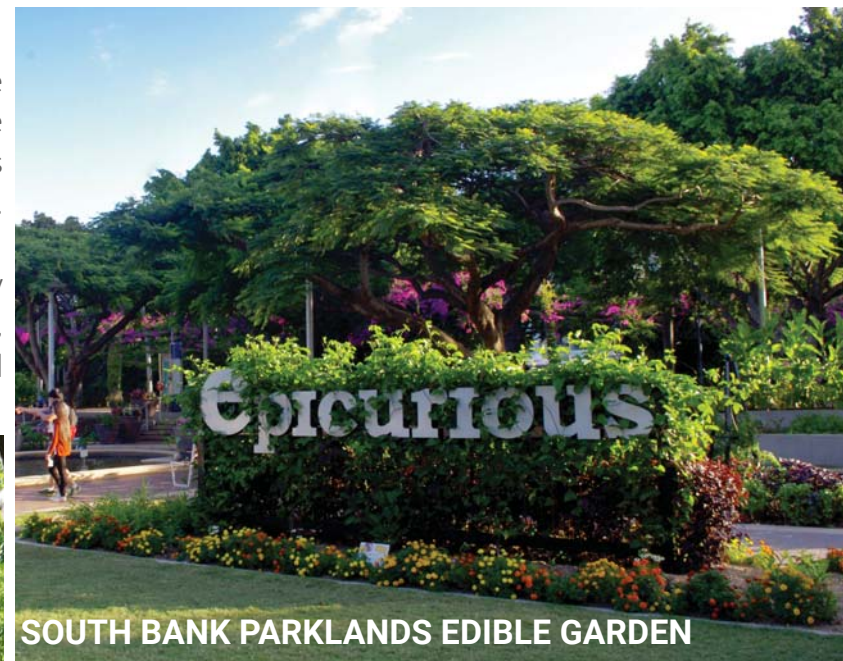
GASWORKS PLAZA, NEWSTEAD



LANDSCAPE ARCHITECTURE

JFP's Landscape Architects combine innovative design with practical knowledge to provide creative and comprehensive design solutions tailored to our client's needs and the environment.

JFP's focus is to provide innovative, high quality landscape solutions. These encapsulate precise, legible ideas which are valued, can be enjoyed and, importantly, are sustainable.



SOUTH BANK PARKLANDS EDIBLE GARDEN


We believe the landscape should offer people renewable experiences through variety and choice creating comfortable, accessible places.

Our experience includes:

- Landscape Master Planning
- External Works Design – Facade to Footpath
- Green infrastructure – Living walls /Green Roofs
- Estimation & Feasibility
- Contract Administration
- Vegetation Management
- Open Spaces and Playscapes
- Town Centre Revitalisation

ROMA STREET PARKLANDS CHILDREN'S GARDEN

ARBORICULTURE PROFILE



JFP URBAN CONSULTANTS OFFER ARBORICULTURE SERVICES WORKING CLOSELY WITH THE PROJECT TEAM TO PROVIDE QUALITY, TIMELY AND COST-EFFECTIVE SOLUTIONS FOR CLIENTS + STAKEHOLDERS, INTEGRATING SCIENTIFIC KNOWLEDGE WITH PROJECT DELIVERY.



ARBORICULTURE

JFP's Arborist services have evolved from a continued drive to improve the ecological and aesthetic quality of landscapes.

JFP offers Arboriculture consultation services in relation to residential and commercial developments. JFP provides non-biased opinions of tree health and suitability within the urban context.



Arboriculture Services include:

- Level 5 AQF Qualified**
- Vegetation Management Plans**
- Vegetation Assessment**
- Tree Appraisal**
- Arboriculture Reports**
- Tree Risk Assessment**
- Project Arboriculture Services**
- Flora Identification/GPS Survey**
- Arboriculture Development Certification**
- Construction + Feasibility**

BRISBANE

JFP House
76 Ernest Street
SOUTH BRISBANE QLD 4101

PO Box 3634
SOUTH BRISBANE QLD 4101

P: (07) 3012 0100
E: brisbane@jfp.com.au

SUNSHINE COAST

T209, Kon-Tiki Tower 1
55 Plaza Parade
MAROOCHYDORE QLD 4558

P: (07) 5450 3900
E: sunshinecoast@jfp.com.au

CENTRAL QUEENSLAND

59 Goondoon Street
GLADSTONE QLD 4680

PO Box 172
GLADSTONE QLD 4680

P: (07) 4839 4100
E: centralqueensland@jfp.com.au

CONTACT US

<https://www.jfp.com.au/contact-us/>