


PROJECT PROFILE

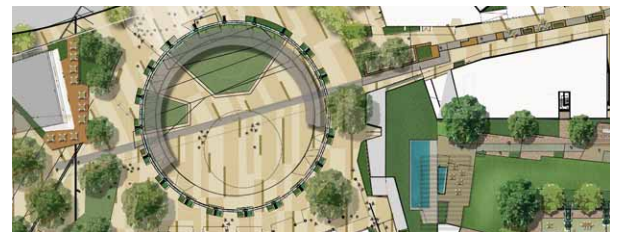
GASWORKS

Newstead - Brisbane City

Commercial/Mixed Use - Public Plaza, Retail Centre & High Density Residential Towers

FAST FACTS

CLIENT	FKP
SCALE	Mixed Use Commercial and Retail Precinct and Public Plaza
DISCIPLINES	
HIGHLIGHTS	<ul style="list-style-type: none"> • Large multi-purpose Public Plaza • Comfortable, sub-tropical central hub • Integration of a Heritage Listed landmark



The Gasworks at Newstead Riverpark is an extensive, master planned, mixed use development, with the heritage listed and predominant Brisbane landmark, The Gasometer, at its centre.

The FKP Gasworks precinct is part of Newstead Riverpark Development of riverfront land that was once a series of yards, stores, pipelines and storage devices associated with gas supply. It was a fragmented place that was dissected by access roads, rail lines and the main drainage line.

JFP's role in the development is to design one cohesive space, while still providing for the various diverse precincts envisioned for the development. Precincts include retail, commercial, bars and restaurants, as well as a very unique public plaza set around and within the structure of the Gasometer itself. JFP has also been involved in the research and design of a large green roof to the commercial precinct; one of the largest in Brisbane, proposed to wrap down across multiple floor levels.

JFP's vision for the space is based on creating a comfortable, subtropical place of renewable experiences rich in detail, choice and variety; while still integrating the play, permeability and legibility of a public space. Much emphasis has been put on offering the excitement of discovery by telling the stories of the Gasworks in the subtle detail of lighting, pavements, seating and material selection.

